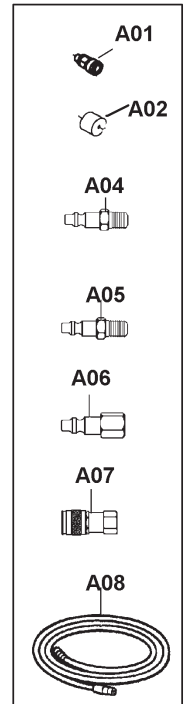
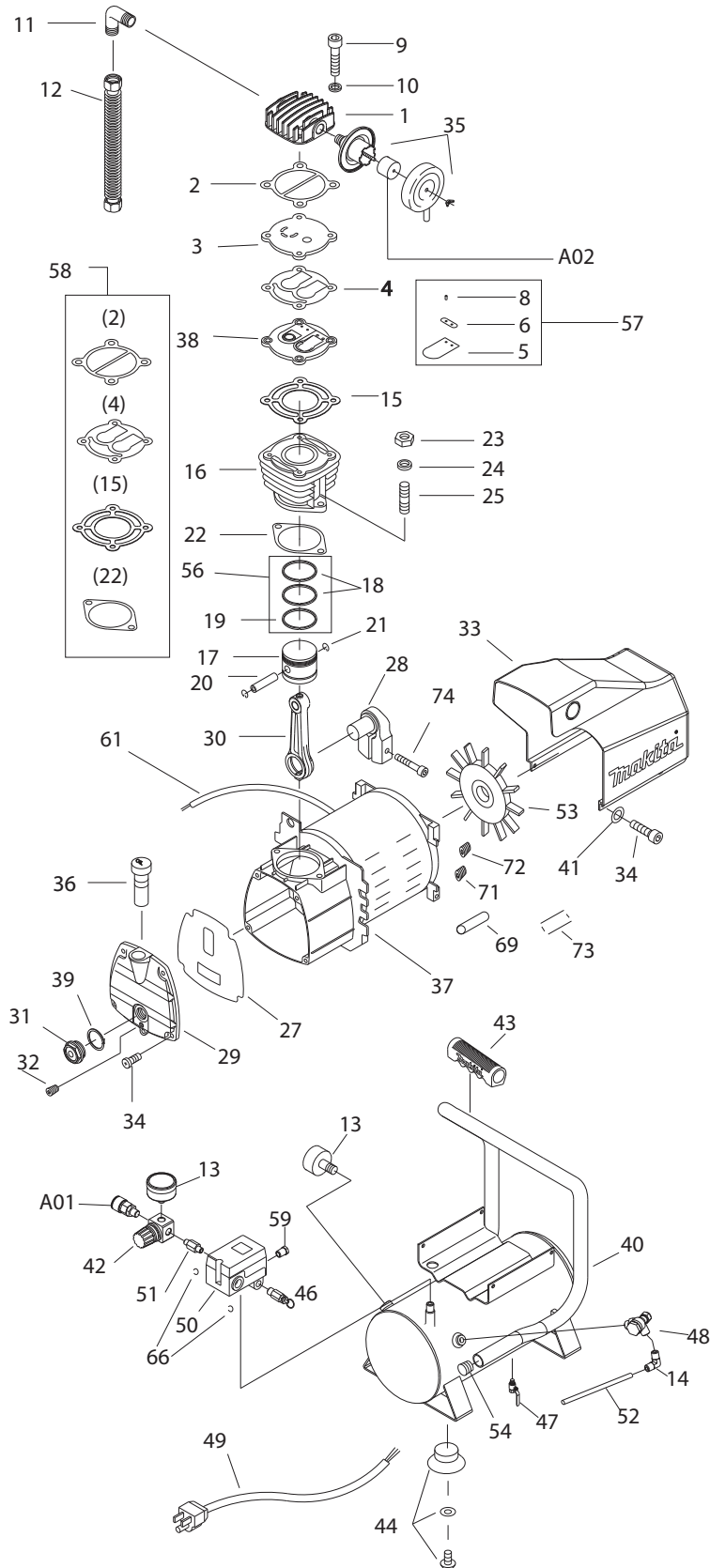




10 - 2010

MAC700

2 H.P. - 2.6 GAL COMPRESSOR



| Item No. | Type | Sub | Part No. | Description | Qty | Unit |
|----------|------|-----|----------|---|-----|------|
| 1 | | | 101001 | Cylinder head | 1 | PC |
| 2 | | | 211001 | Valve seat to head gasket | 1 | PC |
| 3 | | | 104001 | Inlet valve seat | 1 | PC |
| 4 | | | 212001 | Inlet & Exhaust valve seat gasket | 1 | PC |
| 5 | | | 125001 | Inlet & Exhaust valve plate | 2 | PC |
| 6 | | | 127001 | Inlet & Exhaust spring plate | 2 | PC |
| 8 | | | 126001 | Valve plate screw | 4 | PC |
| 9 | | | 352087 | Cylinder head bolt | 4 | PC |
| 10 | | | 382011 | Spring washer for head bolt | 4 | PC |
| 11 | | | 151404 | Exhaust Elbow | 1 | PC |
| 12 | | | 230092S | Discharge tube assembly | 1 | PC |
| 13 | | | 411028 | Pressure gauge | 2 | PC |
| 14 | | | 151001 | Unloading elbow | 1 | PC |
| 15 | | | 213001 | Valve seat to cylinder gasket | 1 | PC |
| 16 | | | 201013 | Cylinder | 1 | PC |
| 17 | | | 203002 | Piston | 1 | PC |
| 18 | | | 206002 | Compression ring | 2 | PC |
| 19 | | | 207002 | Oil control ring | 1 | PC |
| 20 | | | 204002 | Piston pin | 1 | PC |
| 21 | | | 205001 | Piston pin snap ring | 2 | PC |
| 22 | | | 214001 | Cylinder to crankcase gasket | 1 | PC |
| 23 | | | 371005 | Set nut (cylinder to crankcase) | 2 | PC |
| 24 | | | 382005 | Spring washer (cyl. to crankcase) | 2 | PC |
| 25 | | | 358001 | Double head screw | 2 | PC |
| 27 | | | 215001 | Crankcase cover gasket | 1 | PC |
| 28 | | | 302001 | Crankshaft | 1 | PC |
| 29 | | | 304013 | Crankcase cover | 1 | PC |
| 30 | | | 316001 | Connecting rod | 1 | PC |
| 31 | | | 321001 | Oil sight gauge | 1 | PC |
| 32 | | | 360001 | Oil draining plug | 1 | PC |
| 33 | | | 433011 | Motor cover | 1 | PC |
| 34 | | | 352071 | Motor / crankcase cover bolt | 9 | PC |
| 35 | | | 170006 | Air filter assembly | 1 | PC |
| 36 | | | 324003 | Oil filler/crankcase breather | 1 | PC |
| 37 | | | 251215 | Electric motor / Crankcase (Includes Item No.69-72) | 1 | PC |
| 38 | | | 114001 | Exhaust valve seat | 1 | PC |
| 39 | | | 217001 | Oil gauge gasket | 1 | PC |
| 40 | | | 401129 | Air tank | 1 | PC |
| 41 | | | 382004 | Spring washer for motor cover | 4 | PC |
| 42 | | | 410030 | Regulator | 1 | PC |
| 43 | | | 435017 | Rubber handle | 1 | PC |
| 44 | | | 434002 | Tank foot assembly | 4 | PC |
| 46 | | | 407001 | Safety valve (1/4") | 1 | PC |
| 47 | | | 413008 | Drain cock | 1 | PC |
| 48 | | 1 | 409004 | Check valve (Type 1) | 1 | PC |
| | | 2 | 409016 | Check valve (Type 2) | 1 | PC |
| 49 | | | 452005 | Power cord | 1 | PC |
| 50 | | | 412024 | Pressure switch | 1 | PC |
| 51 | | | 441001 | Regulator nipple | 1 | PC |
| 52 | | | 240082 | Unloading tube assembly (1/4") | 1 | PC |
| 53 | | | 431005 | Motor fan | 1 | PC |
| 54 | | | 439010 | Handle plug | 2 | PC |
| 56 | | | RK700 | Ring kit (#18 and 19) | 1 | SET |
| 57 | | | VK700 | Valve kit (#5, 6, and 8) | 1 | SET |
| 58 | | | GK700 | Gasket kit (#2, 4, 15 and 22) | 1 | SET |
| 59 | | | 360002 | Plug for pr.switch manifold | 1 | PC |
| 61 | | | 453076 | Wiring harness(motor-pr. switch) | 1 | PC |

| Item No. | Type | Sub | Part No. | Description | Qty | Unit |
|----------|------|-----|----------|--------------------|-----|------|
| 66 | | | 457002 | Strain Relief Clip | 2 | PC |
| 69 | | | 460001 | Start Capacitor | 1 | PC |
| 71 | | | 458001 | Overload Switch | 1 | PC |
| 72 | | | 459001 | Centrifugal Switch | 1 | PC |
| 73 | | | 455014 | Capacitor Cover | 1 | PC |
| 74 | | | 352106 | Crankshaft Bolt | 1 | PC |
| C01 | | | 471149 | Carton | 1 | PC |

ACCESSORIES

| | | | | | | |
|-----|---|--|------------|---------------------------|---|----|
| A01 | 1 | | 447013 | Quick coupler (1/4") | 1 | PC |
| | 2 | | 10TT-8 | Quick coupler (1/4") | 1 | PC |
| A02 | | | 171002 | Air filter (element only) | 1 | PC |
| A03 | | | 181122-A | Compressor Oil (0.3L) | 1 | PC |
| | | | EAOIL10 | Compressor Oil (1L) | 1 | PC |
| A04 | | | YY036003-A | 1/4" X 1/4" Plug, Male | 1 | PC |
| A05 | | | YY36003-1 | 1/4" X 3/8" Plug, Male | 1 | PC |
| A06 | | | YY311002-X | 1/4" X 1/4" Plug, Female | 1 | PC |
| A07 | | | YY311018-A | 1/4"X1/4" Female Coupler | 1 | PC |
| A08 | | | YYVAH25 | 3/8X25' P.V.C. Air Hose | 1 | PC |
| | | | YYVAH50 | 3/8X50' P.V.C. Air Hose | 1 | PC |
| | | | YYRAH25 | 3/8X25' Rubber Air Hose | 1 | PC |
| | | | YYRAH50 | 3/8X50' Rubber Air Hose | 1 | PC |
| | | | YYRAH100 | 3/8X100' Rubber Air Hose | 1 | PC |